

# Underwater Pond Camera AP-W2036/AP-W5036 - V002 Installation

**Email:** [service@blick-store.de](mailto:service@blick-store.de)

**Phone:** +49 2433-9642581

**Fax:** +49 2433-9642589

Monday to Friday from 08:30h to 12:30h

If more information is needed, please check first if [www.blick-store.de](http://www.blick-store.de)  
additional documents are available in the documentation section of the respective product.

V1.10/2022

# 1

## Introduction

### 1.1 Accessories

Please check the supplied accessories for completeness before starting the assembly. If components are missing or damaged, please contact us immediately.

Component Name	Number
Stainless Steel IP Network Camera	1
Installation	1
Waterproof connection cable	5m / 10m
Dowels / Screws Set	1

### 1.2 Additional information

You can find more information about the settings of the camera, browser menus or the "Device Manager" search tool on our Blick-Store homepage in the instructions section of the respective product.

[www.blick-store.de](http://www.blick-store.de)

# 2

## Connection

### 2.1 Gerätedetails

**Note:** Depending on the version, there may be changes in the connection options or in the design of the camera.

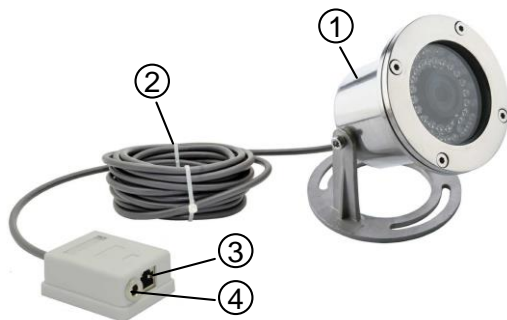


Figure 2-1 Connectivity

	Port Name	Description
1		Camera unit in stainless steel housing
2		5m /10m waterproof connection cable
3	RJ45 LAN	Ethernet network connection with PoE function (power supply)
4	Power supply	Socket DC 12V for external power supply

### Camera Factory Setting:

IP Address: IP Address Space 192.168.1.10 – 20 / or DHCP

TCP Port: 34567

http Port: 80

ONVIF Port: 8899

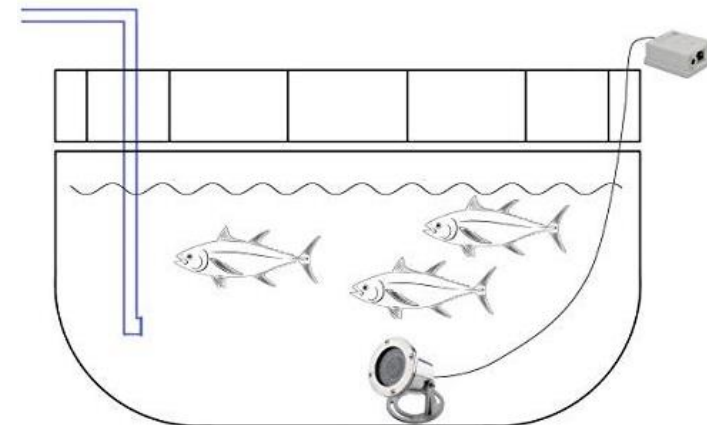
User: admin

Password: (blank no password)

RTSP URL: rtsp://Geräte-IP:554/user=admin\_

password=tIjWpbo6\_channel=1\_stream=0

**Mounting Note:** When mounting the camera, please note that the junction box is located outside the water surface and is installed in an environment protected from rainwater, e.g. by using a junction box.



**3** | **Connecting to the network**

3.1 Konfigurationsschritte

To access the camera using a web browser such as Microsoft Edge / Google Chrome..... or the XMEyePro app for Android/Apple mobile devices, the camera must first be given an IP address matching the local network.

Link to download Windows Device Manager: [DeviceManager](#)

1. Connect the camera's RJ45 Ethernet socket to the router or switch using a network cable.
2. If the router/switch you are using does not have a PoE function to power the camera, connect the 12V power supply and wait one minute for the camera to start.
3. Install the "Device Manager" tool on your Windows computer and then start the program. The Windows software "Device Manager" can also be found on the Blick-Store website in the instructions section of the corresponding camera model.  
**Note:** If you are using an Apple MAC computer, please use the SADPTool to change your IP address.
4. Find a free I P address in your network. This can be done, for example, by using the Windows ping command or by displaying the router website with the assigned IP addresses.
5. Follow the steps shown in Figure 3-1 to adjust the IP address change and network setting.

- a. After starting the Device Manager, press the "IP Search" button.
- b. Check the box on the search result of the camera whose IP address setting you want to change.
- c. Press the SameToPC button.
- d. Change the last three digits of the IP address in the previously determined unused (free) IP number.
- e. By default, no admin password is assigned. If a password has already been set for the admin account, enter it in the "adminPsW" field.
- f. To apply the IP address settings, please press the "Modify" button.
- g. To check the change of address, perform a new search with the "IP Search" button after a few seconds.

**4** | **Camera connection with web browser**

4.1 Login and Web Start Interface

**Note: A web browser such as Google Chrome, FireFox or Microsoft Edge is required to set the camera parameters and play back the camera image. In addition, a plugin must be installed from the camera's home page.**

If you want to open the camera with the default default web browser, click the "WebBrowse" button. If you want to display the camera in a different web browser, enter the corresponding camera IP address manually in the browser input field. Example – http://192.168.1.41

Use the setting "Please click here to download and install VideoPlayTool" to start downloading the plugin component.

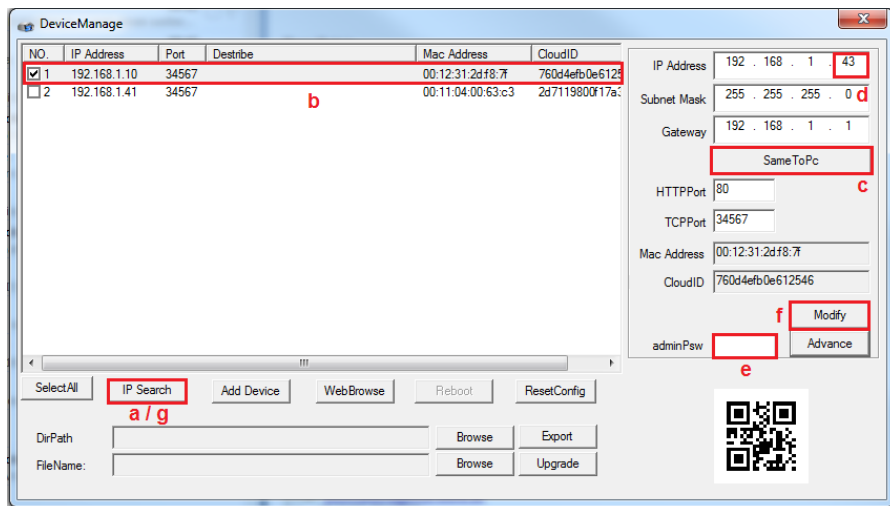


Figure 3-1 Displaying Search Results

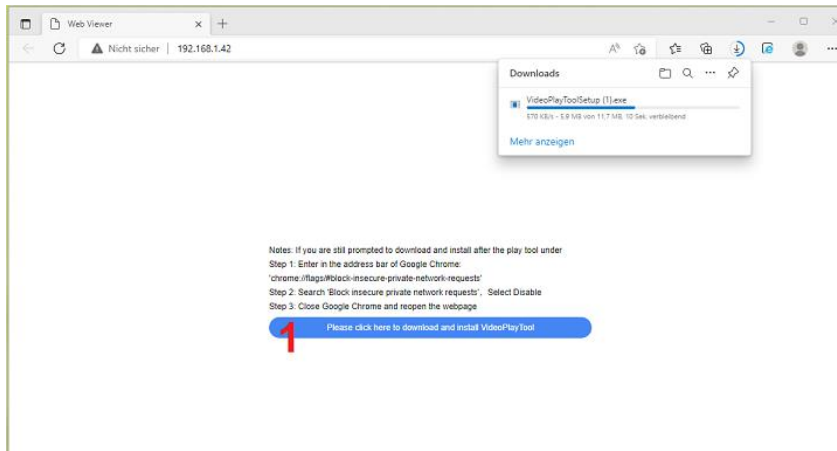


Figure 41 Home Web Browser

Open the directory that was used to download the file with web browser. By default, this is usually the "Download" folder. Start the installation process by double-clicking on the "VideoPlayToolSetup" file.

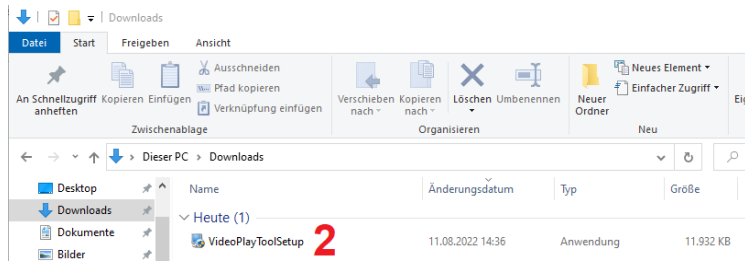


Figure 4-2 Executing an Exe File

Windows User Account Control appears. Answer "Yes" to the query.

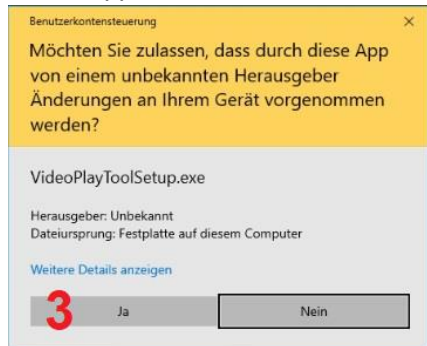


Figure 4-3 Windows User Accounts

The home screen of the software installer appears.

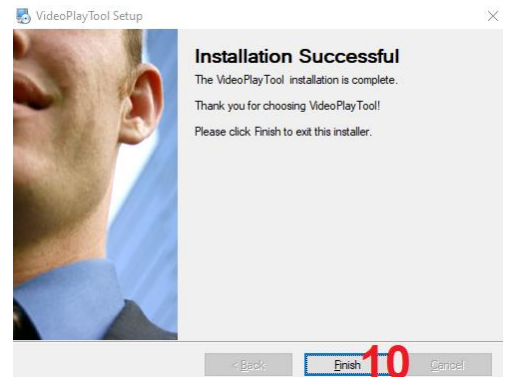
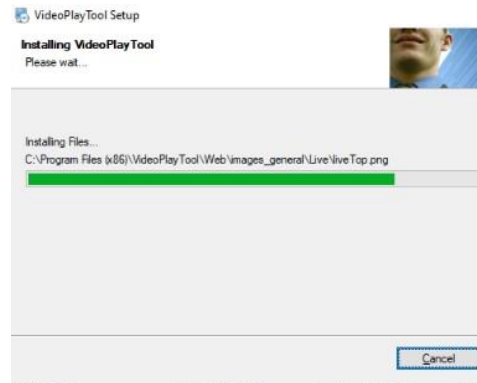
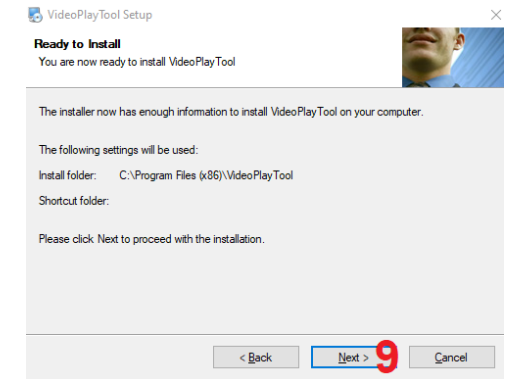
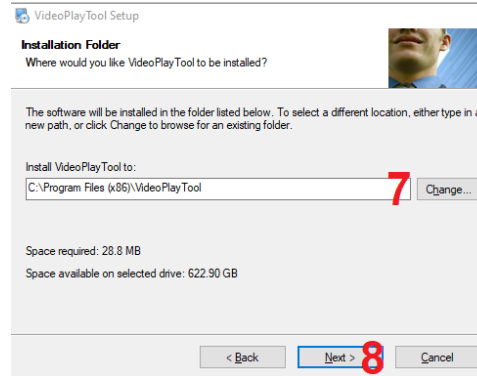
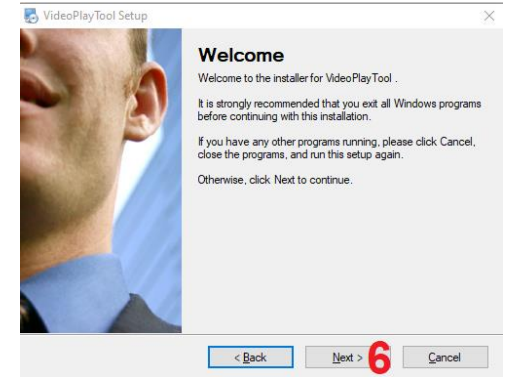
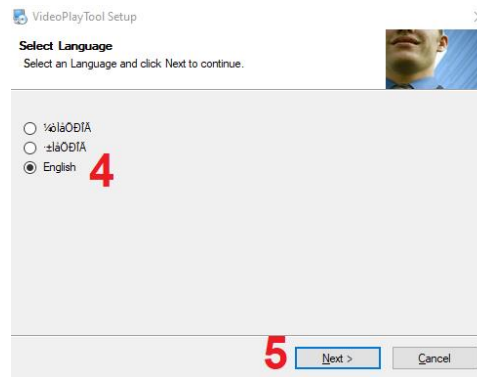


Figure 4-4 Installation Plugin

- 4-5. Put the dot on the English language and press the "Next" button.
6. Press the Next button
- 7-8. If you want to use a different installation directory, press the "Change" button and select the desired installation path. Then press the "Next" button.
9. The installation directory will be displayed. If the information is correct, start the installation with the "Next" button or return an installation step with the "Back" button.
10. Complete the installation by pressing the "Finish" button.

Reload the web page or alternatively restart the web browser and then enter the IP address of the camera. Example – <http://192.168.1.42>  
 Select the language setting of the web interface (top right) to your language.  
 Enter the default user "admin". It is standard no password assigned. Start the login process by pressing the "Login" button.

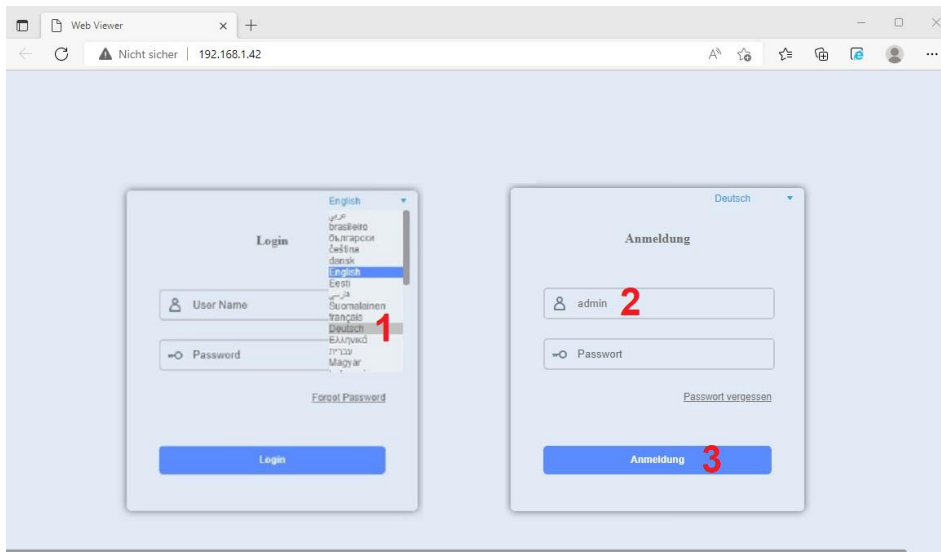





Figure 4-5 User Login



Figure 4-6 Video Stream Selection

-  Main stream - playback of high-resolution video stream HD (first stream)
-  SubStream – playback of the low-resolution video stream SD (second stream)
-  Starts/stops recording the live image to the local hard drive. For standard installation it can be found in the directory: C:\Program Files (x86)\VideoPlayTool\bin\Device\Record

The web browser homepage opens with the display of the camera's live image and access to the main functions and setting options.

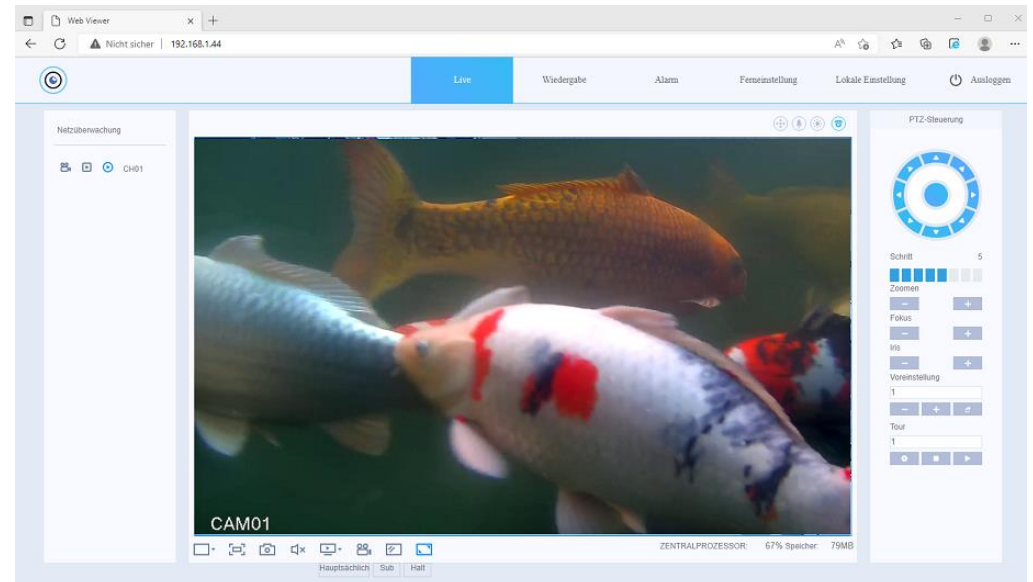


Figure 4-7 Start Menu

**Live** – Creation of the live image in the web browser.

**Playback** – The playback function is only supported for the video clips stored locally on the PC, as the camera does not have an SD card or hard drive for recording.

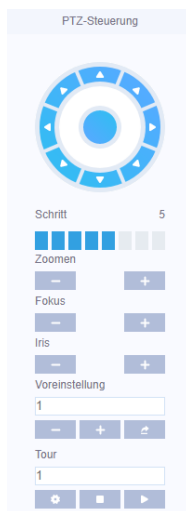
**Alarm** – display of the alarm log (e.g. through motion detection) and the operating log.

**Remote Setting** – Web menus for parameterizing camera settings

**Local** – menus for changing recording settings on the local device.

**Log Out** – Logging off the current operator.

Since the switch between day operation (color image) and night mode (black/white image with infrared illumination) is automatically in both camera models W2036/W5036 by a light sensor, the PTZ control element has no function.



### Switching Controls Color Settings

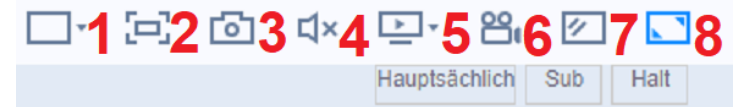
Image Brightness Adjustment

Image Contrast Adjustment

Color Saturation Adjustment

Setting Shade

Reset values to factory settings



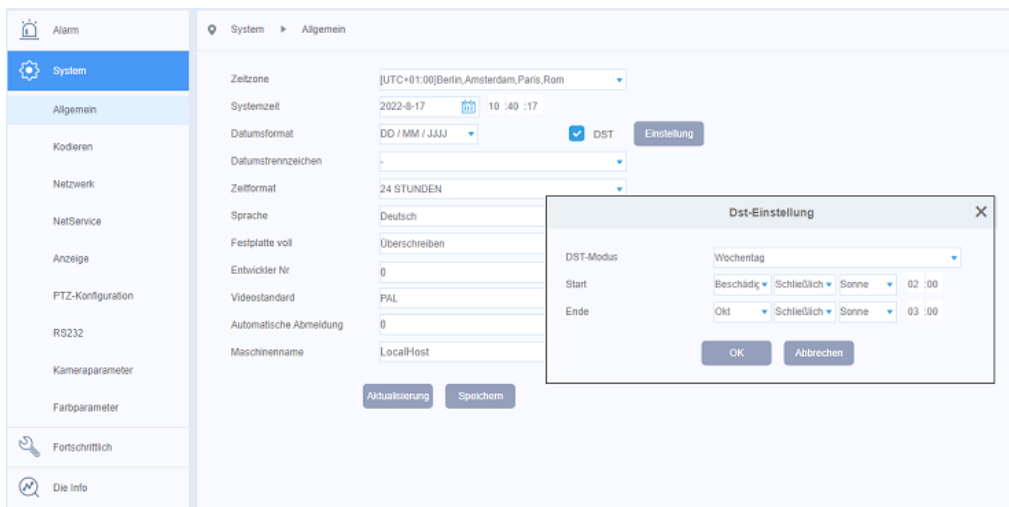
1. Standard display mode
2. Full screen display - exit with the "Esc" key.
3. Recording of a single JPEG image in the set local directory (configurable in the Local Settings menu).
4. Audio transmission (without function because there is no audio)
5. Selection of the displayed camera video stream  
Main - Playback of high-definition video stream HD  
Sub - Playback of the low-resolution video stream SD  
Stop – Interruption of live image playback.
6. Start of local video image recording in the set local directory (configurable in the Local Settings menu).
7. Display of the video image in the original format of the set image resolution.
8. Display of the video image according to the display window.

## 5 Quick Start Guide Camera Settings

The quick start guide only includes some of the essential settings for the camera functions.

### Setting Date Time / Language

To set the correct time/date, follow the menu structure: Remote Setting> System> General. Set the desired date format / time format (24h) and the correct time zone (GMT+1). Since daylight saving time is still in progress, activate the daylight saving time function by ticking the box and set the date of the changeover times. Under Language setting, select German. Apply changes with the "Save" button.



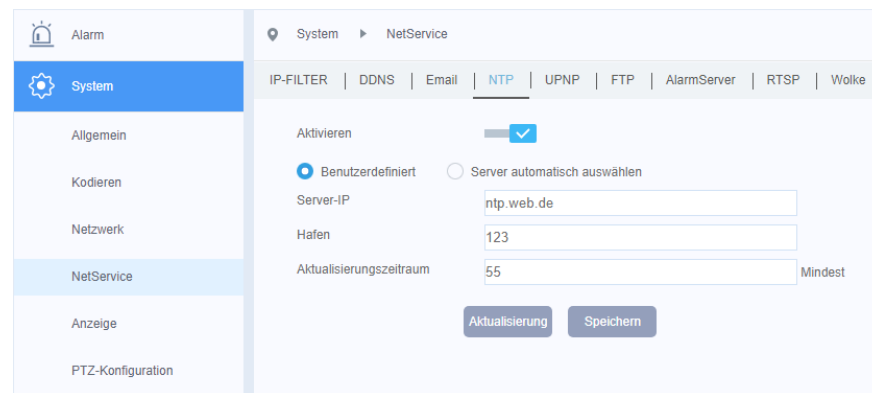
### Einstellung NTP Server

To ensure that the correct time is always displayed, a valid NTP server should be set for time synchronization. To do this, there must be internet access via the router.

Menu Structure: Remote Setting> System> NetService> NTP.

Activate the function by pressing the slide switch. Set the gateway IP address of your router or an NTP server on the Internet such as ntp0.freenet.de // ntp1.t-online.de /

ntp.web.de. Apply changes with the "Save" button. Camera reboots to apply time/date change.

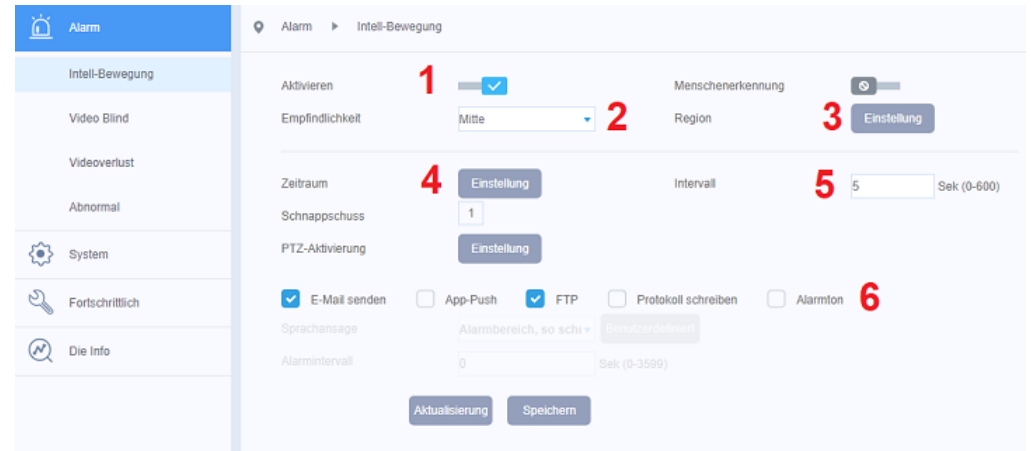
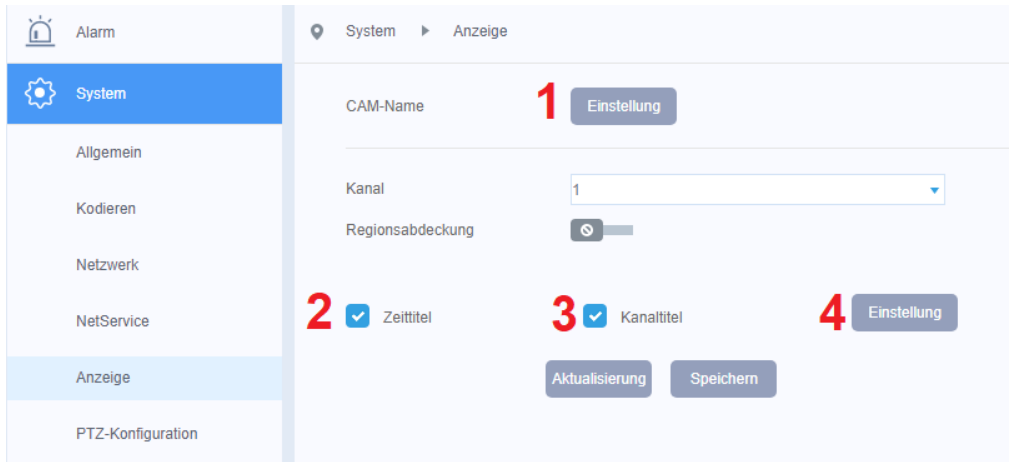


### Camera name and time/date overlay

Follow the menu structure: Remote Setting> System> Display for the display of the camera name and the time/date overlay

1. Press the "Settings" button to change the displayed name of the camera in the new overlay. Press the "OK" button to end the action.
2. Removing the checkmark disables the time/date display.
3. Removing the checkmark will disable the display of the name.
4. Press the "Settings" button to change the position of the time/date and name overlay in the new overlay using mouse, drag and drop. Press the "OK" button to end the action.

Apply the change made with the "Save" button.



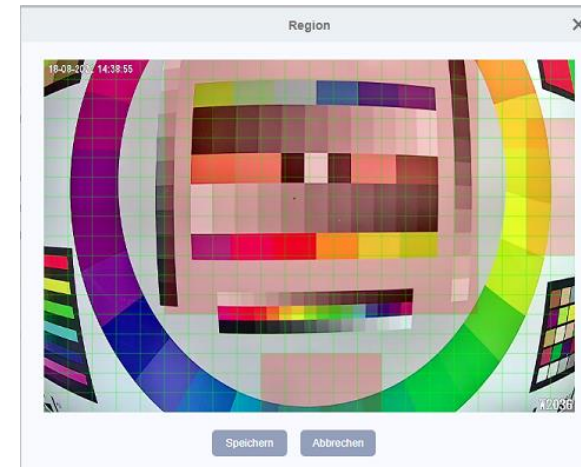
The fields for motion detection are set or deleted by the left mouse button. Activated fields are shown in red .

### Motion Detection Settings

To access the Motion Detection menu, follow the menu structure: Remote Access> Alarm> Intell Movement

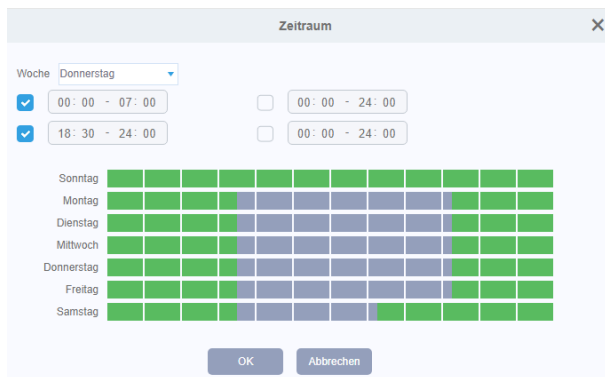
1. Press the "Activate" slide switch to activate motion detection.
2. From the drop-down menu, select one of the sensitivity levels that suits your application.
3. Press the "Setting" button to specify the area to be used for motion detection evaluation.
4. Press the "Setting" button to set a weekly calendar for timed activation/deactivation of motion detection.
5. The interval time determines how long motion detection is inactive after detecting an alarm before a new alarm can be detected.
6. Select an alarm response by ticking the box.

Apply the change made with the "Save" button.



Set weekly calendars to set the desired activation period for motion detection. Active period is marked in green.





### Camera Video Stream

The settings of the camera video stream determine the displayed image quality. The camera has dual streaming capabilities. The main stream (HD) for high-resolution image display and a second low-resolution SD video stream.

Menüstruktur: Feineinstellung > System > Kodieren

With H.264 compression, only the changes between two images are transferred. The bandwidth required for transmission essentially depends on the size of the changes between the images, the set image resolution, and the image details. H.265 compression is about 10% more effective than H.264 and requires less bandwidth. However, it is important to make sure that the receiving side (NVR, mobile app...) also supports the H.265 standard.

**Compression:** Adjustable between H.265 and H.264

**Resolution:** There are several resolutions available depending on the camera model. Make your selection in the drop-down list. For each resolution, a different bitrate value is recommended.

**FPS:** Depending on the image resolution and camera model, a frame rate between 1-15fps or 1-25fps is available.

**Bitratentyp:** Choose between CBR (bitrate default) and VBR mode.

**Note:** The CBR mode is a fixed bitrate setting (bandwidth limit) that is always transmitted.

The VBR mode is a dynamic bitrate setting (bandwidth limit) that transmits the reference maximum value only when necessary.

**Quality:** The selection of the image quality to be transmitted in 6 levels is only available in VBR mode.

**Value of bitrate:** If you select the CBR (bitrate default) mode, you can enter the value for the bitrate to be transmitted.

**Note:** The smaller the value, the greater the compression required and the image quality will be reduced to reach the set value.

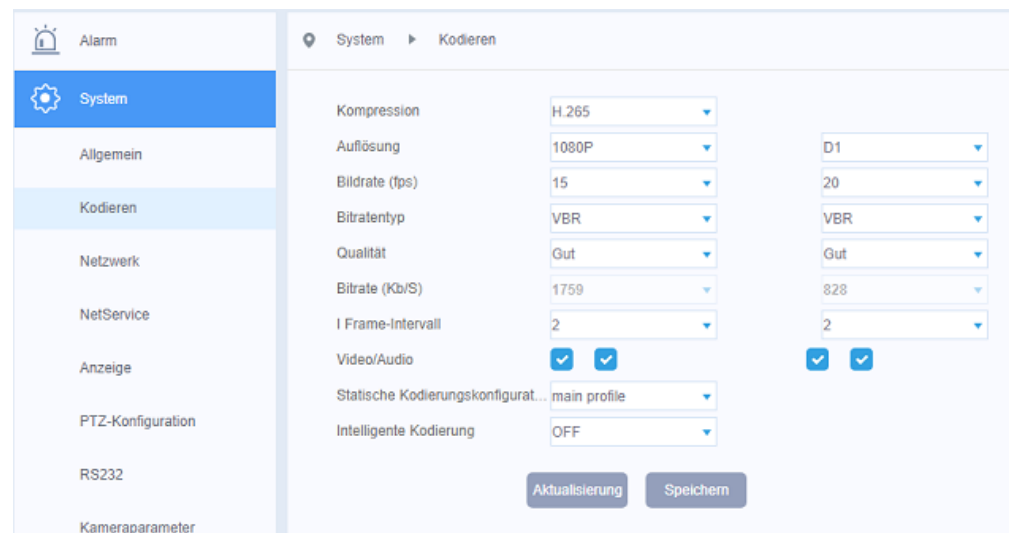
**I Frame Interval:** This is where you set the value for the distance between an I-frame (full screen) and the I-frame (difference image) during transmission.

The value can be set in the range 1 to 12.

**Note:** The higher the value is set, the lower the required bitrate becomes. However, it also reduces the image quality. The default value is 2.

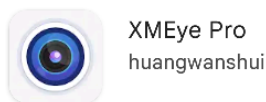
**Static encoding configuration:** Here you can select the profile for the H.265 compression standard from a list.

It is important to make sure that the receiving side used, such as a recorder, also supports the set profile.



## 6 Connection to the XMEye APP

### 6.1 Konfigurationsschritte



Depending on your operating system (Google Android / Apple iOS), visit the corresponding APP Store and install the XMEye Pro APP on your mobile phone. Confirm that you have read the privacy policy.

1. The prerequisite is that the camera has an IP address corresponding to the local network (chapter 3.1) and has access to the Internet via the router in order to use the P2P function for the connection outside the local network .
2. Connect your mobile phone to the local Wi-Fi and launch the XMEye Pro. By pressing the Agree button, confirm the Terms of Use and Privacy Policy. If you do not have an XMeye account yet, please follow the link "Register", otherwise enter your login details and follow point 6. Figure-1.
3. Enter a valid email address (1) to receive a verification code and press the "Get Code" button in Figure-2/3.
4. Retrieve the email address provided and enter the code (2) that was sent to you . Then press the "Sharper" button (3) Figure-2/3.

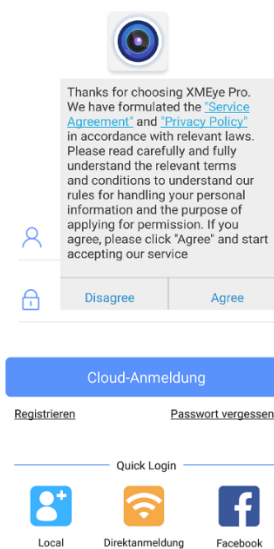


Figure-1

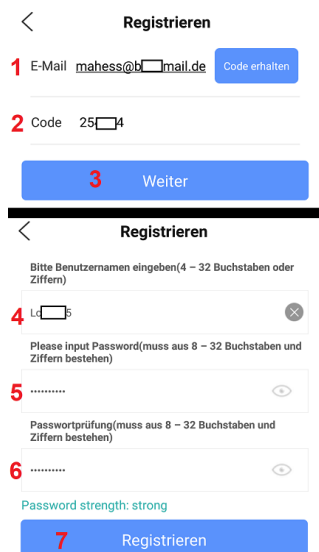


Figure-2/3

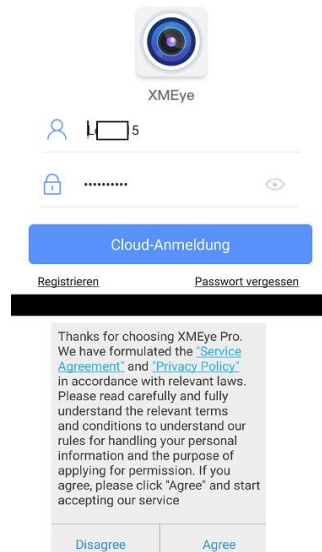


Figure-4

5 .Enter a username (at least four characters 4) and a password (at least 8 characters - consisting of letters and numbers 5). After confirming (repeat 6) the password, confirm with "Register" (7) Figure-2/3.

6. Enter the previously defined credentials in the two fields and press the "Cloud Login" button. By pressing the Agree button, confirm the Terms of Use and Privacy Policy Fig. dung-4

7. Press the "+" icon or alternatively the "Add Device" icon to add a camera to the app. In the menu that appears, select the Wired Camera setting. Figure-5/6.

8. To access the camera from outside the local network (via the Internet), please select the setting "Add Device Manually" so that the camera is connected via the P2P function.

9. In the first line, enter a name for the camera. Scan the QR code on the camera nameplate by clicking on the QR symbol or enter the Cloud ID manually using the keyboard. **The information can also be found in the interface of the Device Manager search tool (Cloud ID – QR Code) as shown in Figure 3-1, Chapter 3.** The user is admin and by default there is no password assigned. If a password has already been assigned, please enter it. Finish typing with the "Okay" button. Figure-7

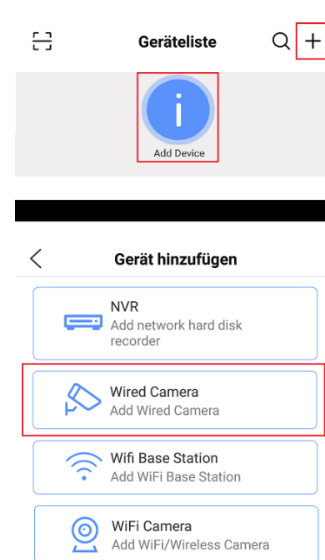


Figure-5/6

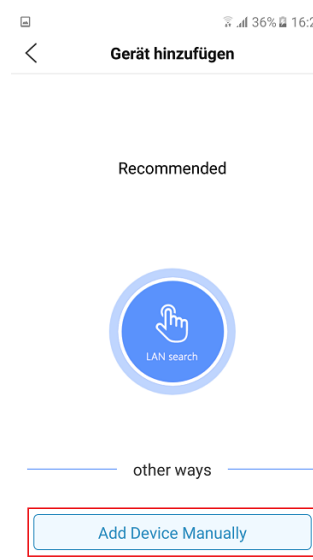


Figure-6

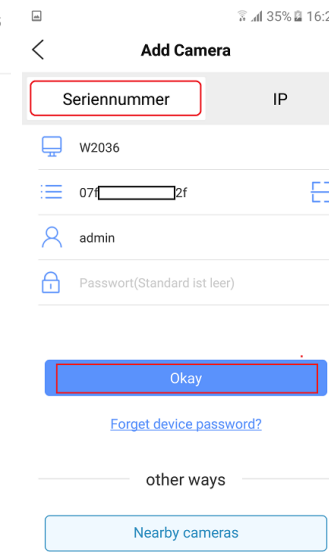




Figure-7

9. The camera will now appear in the app's list of devices with the status (online) displayed. Press the play icon  to display the camera's live image. EN 8/9 illustrations.

10. To access the camera's configuration settings menu, click on the gear icon  Figures 8-10

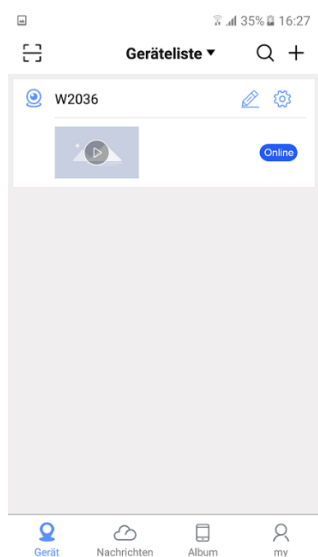


Figure-8



Figure-9

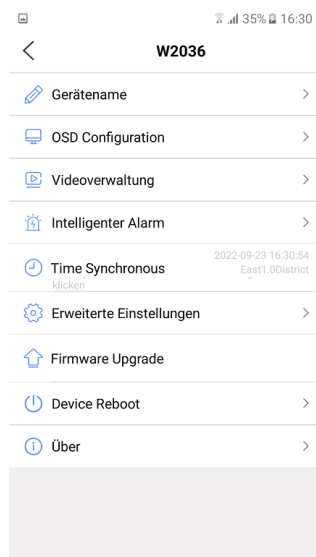


Figure-10


**Note:** If there is no connection to the live image transmission, check the following points:


- Does the camera have an IP address that matches the local network? (see Chapter 3)
- Does the camera have a connection to the Internet through the router ?
- Is the P2P function activated by ticking the box? To be found in the camera menu: Remotesetting > system >NetService >Cloud
- Are the necessary data, such as camera, cloud ID and account credentials, entered correctly?

## Overview of the main control symbols

The instructions are for reference only, as icons and functions may change in future app versions.



Live Video Control Symbols Figure -9


 Menu for camera settings such as image resolution / frame rate of the video Streams, text and time overlay, time setting, camera restart...  
Figure-10

 Recording a video clip of the received video image on mobile device.


 Single frame recording of the received video image on the mobile device.

   Selection for multi-image display

  Switching between high-resolution (HD) video stream and low-resolution (SD) video stream

 Switch to full-screen mode

The following functions are not supported by the camera:

  Audio Transmission / Pan/Tilt  Control

 Playback of local recordings on the camera SD card