



quick start Guide

HiP2P Client App (application)

E-mail: service@blick-store.de

Tel .: +49 2433-9642580

Fax: +49 2433-9642589

Technical support Monday to Friday from 9:00 a.m. to 4:00 p.m.

If more information is needed, please check first on www.blick-store.de

Additional documents are available in the instructions for the respective product.

1 | Installation of the HiP2P application (app)

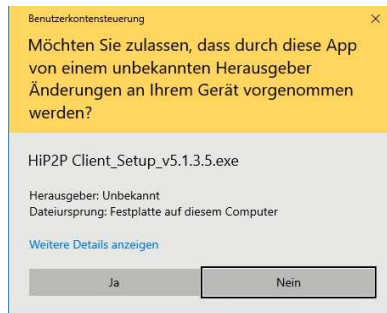
Note: The brief instructions contain a description of the main operating and setting options for the HiP2P app. The description of the instructions is based on the installation of the Windows version.

The HiP2P client software is only designed for Windows or Apple MAC operating systems. When using Android or Apple iOS based systems, the CamHi or CamHi Pro app must be used.

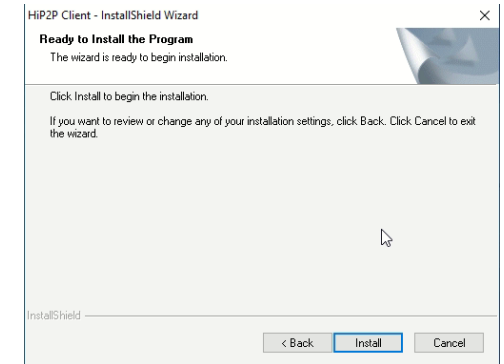
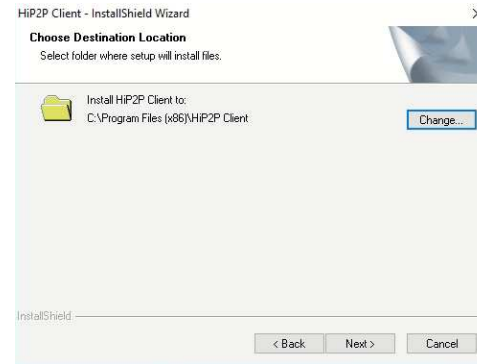
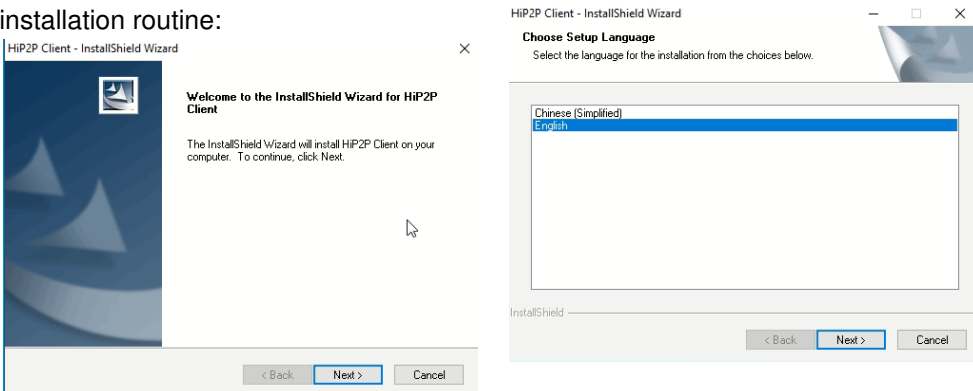
1.1 Installation

Start the installation routine after downloading the software from our website by double-clicking on the file. Note that Windows administrator rights are required to install the software.

1. Confirm the display through the Windows User Account Control with the Yes button



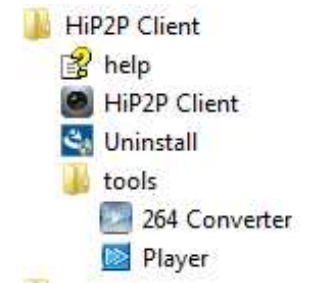
2. Select the English language for the installation process. If a different directory is required for the installation of the application, use the "Change" button in the corresponding query. See example installation routine:



3. After the Installation, the following icon will appear on the desktop:



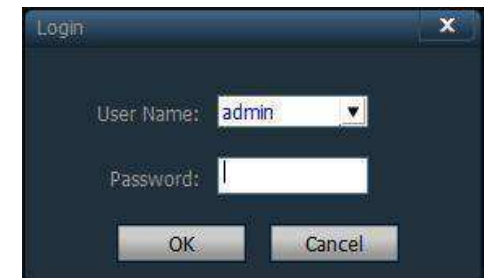
4. In addition to the HiP2P client software, a program for converting camera recordings in the original format and for playing back camera recordings is also installed. The following interface is displayed in the Windows program bar:



2 | HiP2P start interface

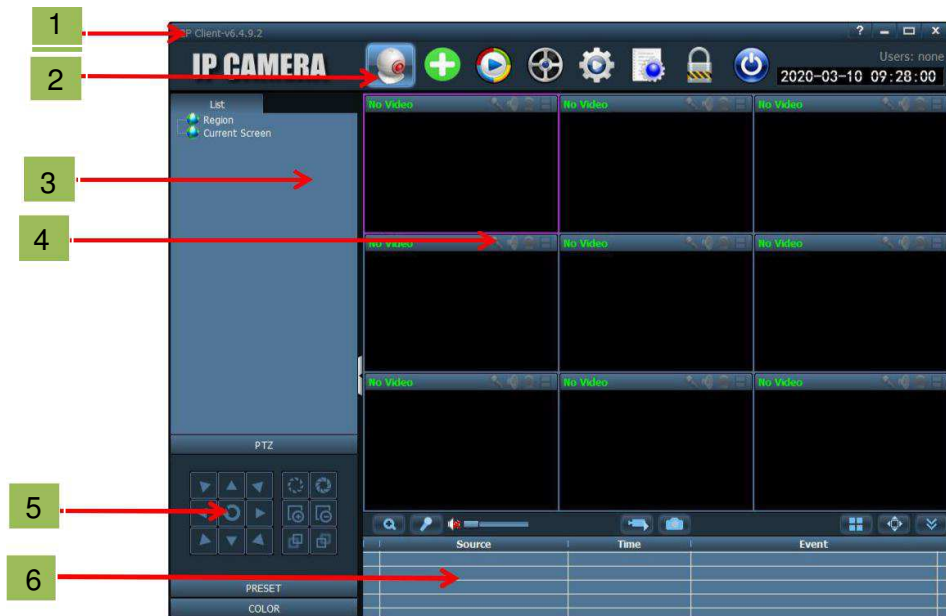
2.1 Starting the application







After starting the application, the login window appears. The default is the user "admin", who has administrator rights, and no password is preset. Click the OK button.



2.2 Main user interface









-  Playback of camera images recorded locally on the PC
-  Playback of video recordings saved on the camera SD card.
-  Configuration interface for the cameras and HiP2P application
-  View the log records
-  Log off / or change user
-  Exit client application


1. System button bar

The following functions can be carried out using the system buttons

-  Display of a window with functional explanations (English)
-  Move the application to the taskbar
-  Minimize / maximize window
-  close application

2. Tab bar

The symbols displayed can be used to switch between the main operating functions of the application.

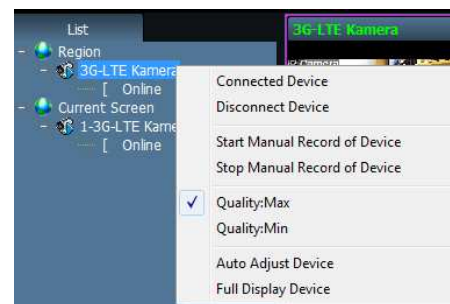
-  Live image view - single image or multiple image display

Automatic local network search of cameras

3. Device tree



List of cameras added to the application with the Connection status display. Double-clicking the camera name will put the picture in the purple frame marked field.



With a right click of the mouse, further operating functions are displayed. The image quality of the live image display can be set between the high resolution of the first HD video stream (Quality Max) and the second low-resolution SD video stream (Quality Min). With the setting "Start Manual Record of Device", a manual start of the recording of the transferred images on the

local hard disk can be started.

4. Live image view of the connected cameras.



Choice between single image display and various multiple image displays

5. PTZ control



Arrow keys to control the mechanical pan / tilt function when using a corresponding camera. Buttons for operating the zoom lens: zoom / focus / aperture setting

position under a preset
Call up a saved position with the Del key.

NO.	PresetName
001	Preset001
002	Preset002
003	Preset003
004	Preset004
005	Preset005
006	Preset006
007	Preset007

Goto Set Del

Save a mechanical camera number with the Set button. with the Goto key. Delete a

6. Alarm information list

	Source	Time	
	EFB (3G-LTE Kamera)	20-07-07 08:37:00	Start HSR Alarm
	EFB (3G-LTE Kamera)	20-07-07 08:36:22	Start HSR Alarm
	EFB (3G-LTE Kamera)	20-07-07 08:33:07	Connect Success!
	EFB (3G-LTE Kamera)	20-07-07 08:33:06	Is connecting...

List of camera events.

2.3 Other operating symbols



Manual recording of the displayed camera to the local hard drive Start / stop.



During manual recording, the icon in the camera window is

4th

Recording settings



displayed in green.

Storage of a single image of the displayed (selected) camera



Necessary steps to add an AP 3G / LTE camera or AP WLAN camera

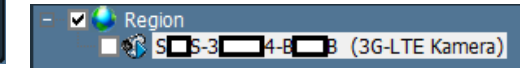
Start the configuration interface

Input UID

Select the Input UID button to add a new camera

Enter the UID camera number listed on the product label or on the box. Enter a name in the corresponding field. The user name is admin and the default password is admin if this has not yet been changed. Press the "OK" button to save the change and add the

camera.



The added camera appears under the standard created area "Region"

Modify Device

To edit settings such as password and camera name later, select the camera and press the "Modify Device" button.



Delete Device

The selected camera is deleted with the "Delete Device" button.

Switch to the live view mode and proceed as described in section 2 under point 3 to display the camera.

3

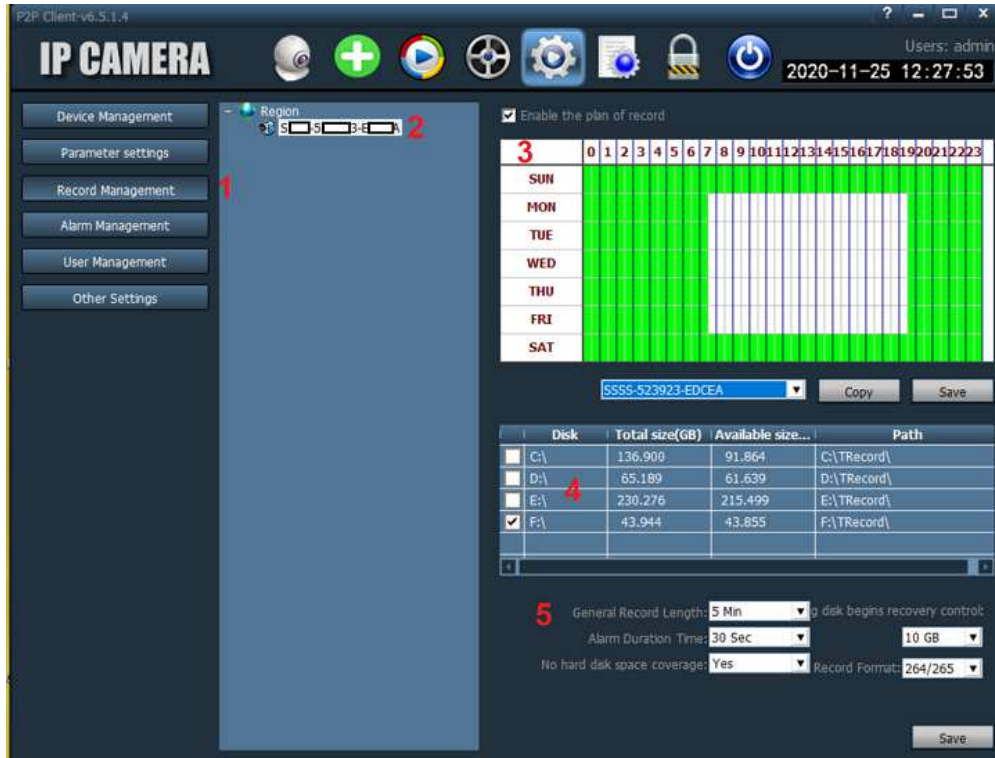
Add the camera to the HiP2P



Start the configuration interface

Settings of the Record Management menu

1. Select the menu setting "Record Management" for the configuration of the general recording settings and the continuous (permanent) recording using the calendar function.



2. If multiple cameras have been added to the application, then select
3. Activate the calendar function for continuous recording by checking the box "Enable the plan of record". By left-clicking with the mouse button and dragging, the desired time ranges (green) for the local recording can be set. A separate weekly calendar can be defined for each camera added. Please note that when using a mobile data connection (3G / LTE), correspondingly large amounts of data are generated for image transmission, as there must be a connection to the camera. Save the changes made in the calendar with the "Save" button. Calendar settings for continuous recording can be transferred to other cameras using the drop-down menu and the Copy button.

4. The storage location for the local recordings can be specified here. All physical and virtual drives are listed. The selection made by ticking the box applies to all connected cameras.
5. The settings in area 5 apply to all connected cameras and changes therefore only need to be made once.

General Record Length:The length of time in minutes for the data file in recording mode continuous (duration) is specified here. The data files are displayed in the search result of the playback mode.

Alarm Duration Time: Recording duration after an alarm, e.g. through motion detection.

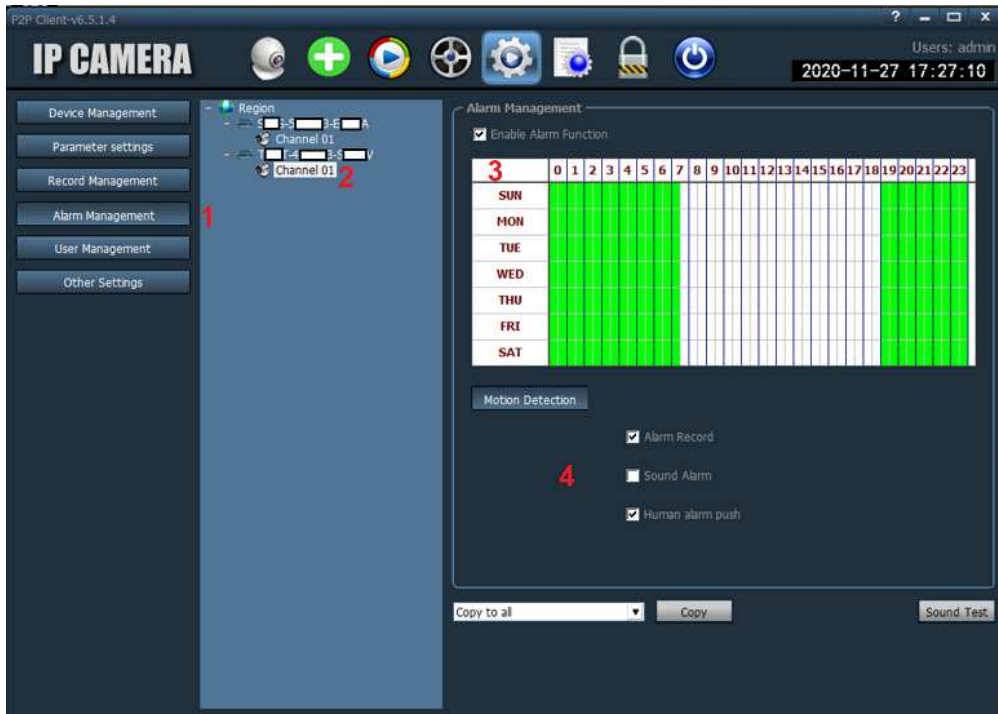
No hard disk space coverage:If you select YES (standard), when the maximum storage capacity is reached, the oldest recordings are overwritten and the recording continues. If the setting is NO, the recording will be stopped when the maximum storage capacity is reached.

The remaining disk begins recovery control: A value in GB (standard 20GB) can be set here, which should not be used for storing the recordings of the preset drive.

Record format:If you select 264/265, the recordings are saved in the original format, and this app (application) or the player installed (see Chapter 1, Point 4) is required to play the recordings. With the AVI setting, the storage takes place in the open format, which can be played back with standard players such as VLC or Quick Time Player. However, this setting requires more computer power.

Settings of the alarm management menu

1. Select the "Alarm Management" menu setting for configuring the alarm reaction when an alarm occurs, for example through motion detection.



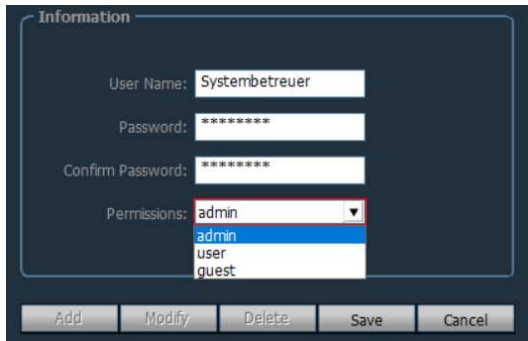
1. Select the "User Management" menu to make changes to the settings of existing operators or to create new operators.



2. If you want to make changes to the settings of an existing operator, select him and press the Modify button to change settings such as password and access rights (permission).
3. Field for entering the operator data.
4. **Add** - Button for adding a new operator
Modify - Change settings such as password and access rights (permission).
Delete - Delete an existing operator selected in area 2.
Save - Save changed operator settings
Cancel - Cancel process

Add a server

1. Press the "Add" button to create a new operator.
2. Enter an operator name and enter the password for logging in this operator twice in the corresponding input lines.
3. Three levels are preset for the operator's access rights.
Admin - Access to live images, playback of recordings, changes to system settings
User - Access to live images and playback of recordings
Guest - Access to the live images
4. Save changes with the Save button.

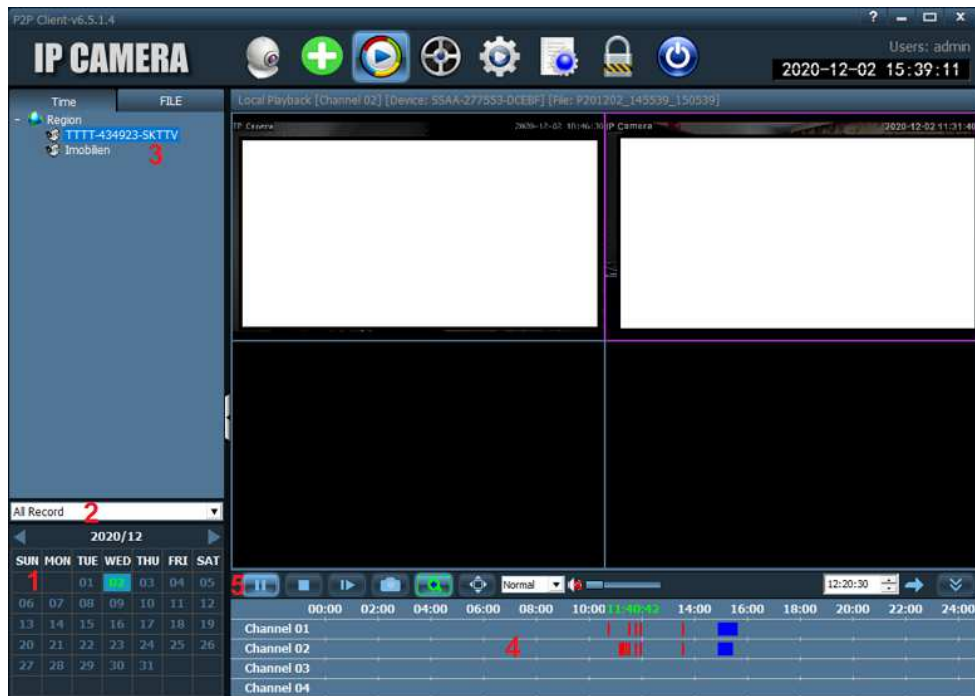


2. Select the type of recording that should appear in the search result.
 - All Record** - All types of recording
 - Manual** - Only the recordings that were started manually using the app interface. See Chapter 2, Point 3.
 - Alarm** - Recordings triggered by motion or person detection.
 - Plan** - Continuous (duration) recordings, controlled by the weekly calendar settings.
3. When playing back several camera recordings, first select the window from the quadruple display (framed in purple) in which the camera is to be played back. Then click on the desired camera in the display tree. The recordings found are displayed in area 4.
4. By clicking with the mouse pointer on the desired recording in the displayed time window with the search results, playback is started directly.

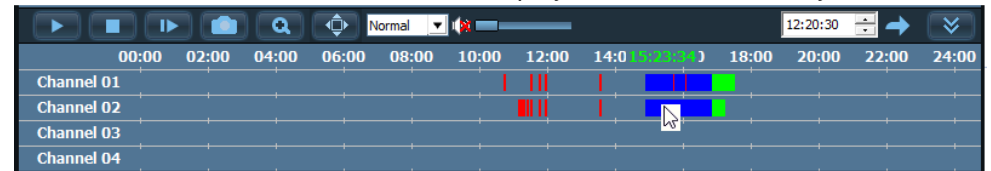
6th Playback of locally saved recordings



Start the playback interface for the local recordings



1. Select the desired month and day for playing back the recording from the calendar. The days with a recording are highlighted in color.



Color coding of the different types of recording are:

Red = alarm recording


Blue = Continuous recording by the weekly calendar

Green = recording controlled manually via the app surface


5. The following functions are available to control playback:


 /  - Start / pause playback

 - Stop playback

 - Single image playback per key press. Must be run during normal playback.

 - Recording a single image



 - Digital zoom, an image area for digital enlargement can be selected using the mouse pointer.

 - Full screen mode, is ended again with the ESC key

 - Adjustment of the playback speed

Faster playback = 1/2, 1/4, 1/8

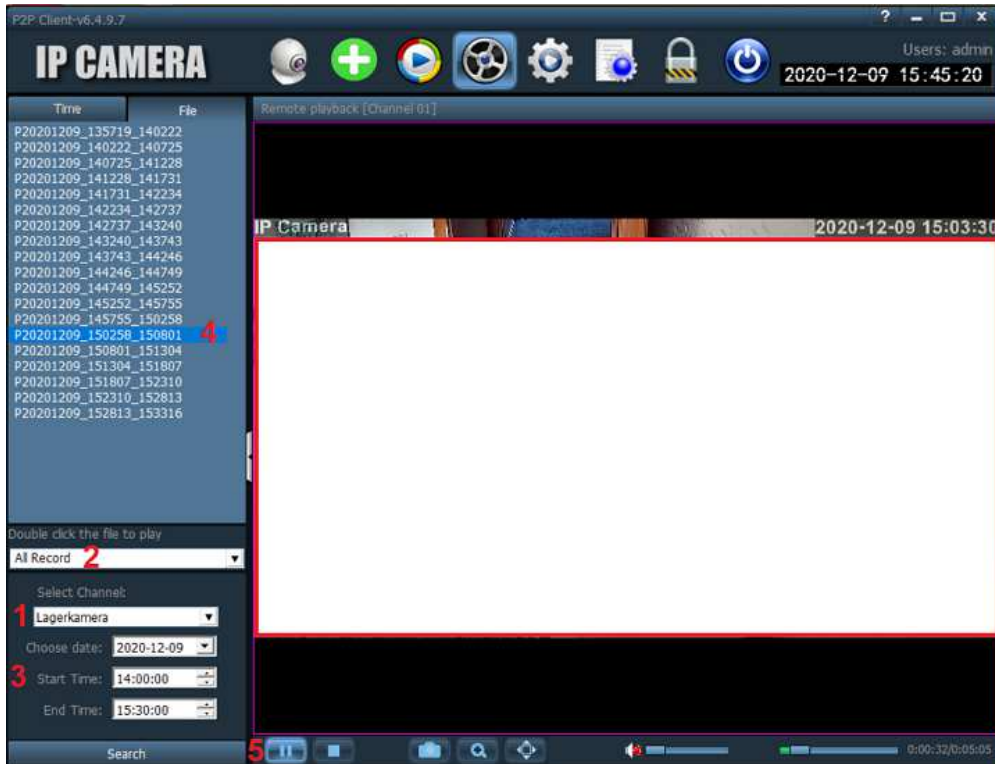
Slower playback = 2, 4, 8

 /  - Activate / deactivate speakers for audio playback and volume control. Please note that a camera that supports this function is also required for audio recording.

7th Playback of remote camera recordings (SD card)



Start the playback interface to view the video recordings saved on the camera's micro SD card. Please note that no single image recordings (snapshots) are played back.





1. If several cameras have been added, select the appropriate camera from the list.
2. Select the type of recording that should appear in the search result.
All Record - All recording types (includes time-controlled recordings from the weekly calendar).
Alarm - Recordings triggered by motion or person detection.
3. Setting the date and the start or end time for searching for video recordings on the SD memory card. The search is started with the "Search" button.


4. The video recording files that match the search criteria are displayed. Double-click a recording file to start playback. In the remote camera playback mode, it is not possible to display the saved recordings using the timeline (as in Chapter 6).
5. The following functions are available to control playback:


 /  - Start / pause playback



 - Stop playback

 - Single image playback per key press. Must be run during normal playback.

 - Recording a single image

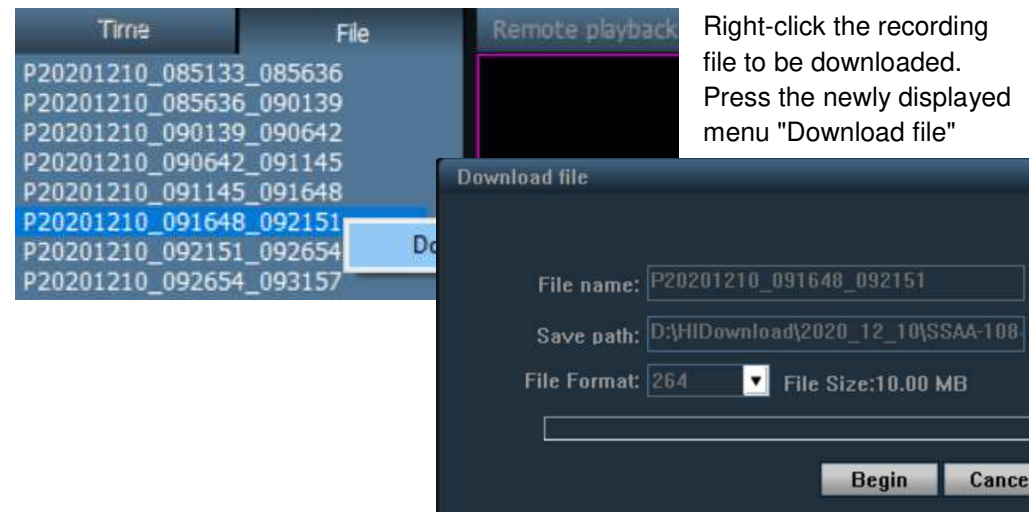
 - Digital zoom, an image area for digital enlargement can be selected using the mouse pointer.

 - Full screen mode, is ended again with the ESC key

 /  - Activate / deactivate speakers for audio playback and volume control. Please note that a camera that supports this function is also required for audio recording.

Download a file for backup

To download a file for backup on the local device, do the following.



Right-click the recording file to be downloaded. Press the newly displayed menu "Download file"

Press the “Begin” button to save the recording file on the local PC.

8th | More settings

The following settings can be made in the Other Settings menu.

Connect timeout:- Adjustable between 5-60 seconds. Time allowed to establish a connection to the connected cameras.

Log retention time: - Adjustable period for the recording period of the log file

Capture format:- Adjustable data format for the single image recording, which was triggered via the user interface. The formats JPEG and BMP (without data compression) are available.

Image capture path: - Adjustable directory for saving the individual images.

No need to login into the software automatically:- If the tick is removed, the menu for operator login is displayed immediately after starting the application. Otherwise, the live image view takes place without operator login.



Start the software automatically connect all devices: - When the function is activated, a connection to the added cameras is established automatically after starting the application.

Booting the system automatically run the program: - The HiP2P application is started automatically when the operating system is started.

Single screen number: - Selection for the display of the multiple image display in the live image mode.

Display mode: - Selection of the display of the video image by the graphics card used (rendering).

The default password add device: - Setting the login password when new cameras are added to the application.

Rebuild video index: - Deletes the existing index file for the recording memory and creates a new index file.

Import parameters:- Imports the settings for the HiP2P application from a file. If the settings come from another HiP2P installation, make sure that it has the same software version and that the settings, such as the recording location, are compatible.

Export parameters: - Saves the HiP2P setting in a file.