

Technical Info

AP P10xx 3G / 4G cameras

Setting timed single picture (JPEG) Recording

E-mail: service@blick-store.de

Tel .: + 49 2433-9642580

Fax: + 49 2433-964258

Technical support Monday to Friday 10:00 to 12:00 and 2:00 p.m. to 4:00 p.m.

If check further information is required to check out whether on the www.blick-store.de of each product, additional documents are in the field guides available.

This camera menu setting can only be adjusted via a web browser-based connection.

Note: Only when using the Microsoft Internet Explorer (version IE9 IE11), the camera image and all web menus will be displayed there for some features to install the activeX plug-in is required, which supports only Internet Explorer.

In Windows10 you find the IE11 in the menu "Start" and then the "Windows Accessories" folder.

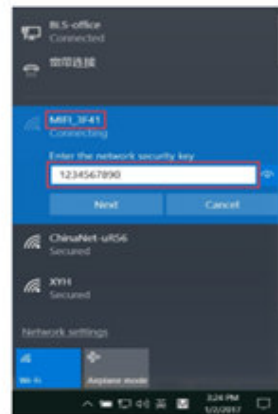
If a different web browser such as FireFox or Chrome uses to account for the steps to install the plug-in.

When using a different web browser than Internet Explorer the following functions and menus are not supported.

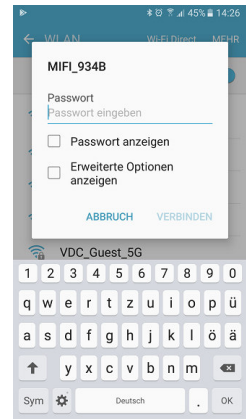
1. No display of the camera image in the browser
2. Menu Motion Detection for the detection fields and sensitivity adjustment for motion detection is not listed
3. Menu Video Shade to cover areas of the image to protect privacy is not displayed.
4. The "Playback" menu "Record", "Capture" and "SD Card" are not available in the monitor view.

There it is necessary to log on only to the local network of the camera.

1. Log into the local wireless 3G / 4G camera called MiFi_XXXX. The default network password is 1234567890th

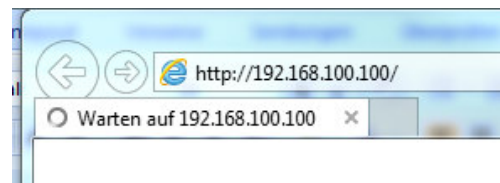


PC



Smartphone

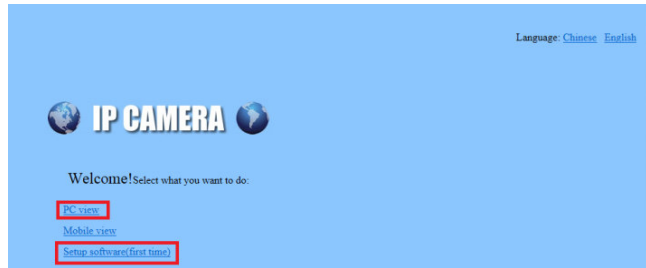
2. Enter the IP address 192.168.100.100 into the browser box.



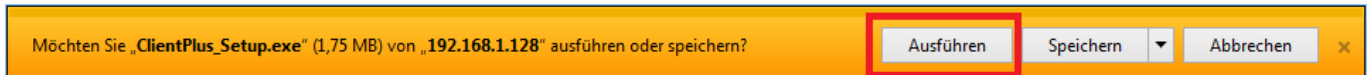
3. After a call by the browser, the display takes place the login window. Enter the credentials for the camera. By default Username: admin configures: admin / password.



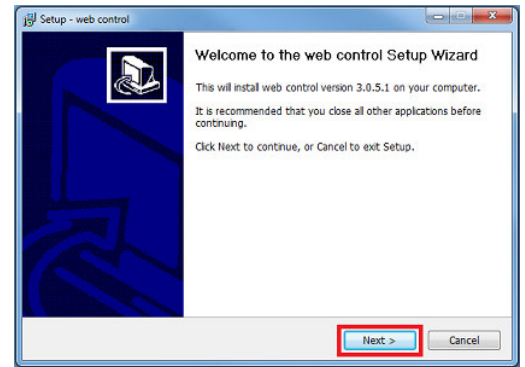
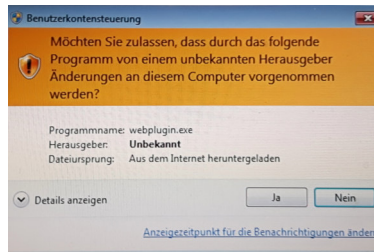
4. After entering the credentials stelle set the menu language to English.



5. When using the Internet Explorer then the "Run" button will display the "Setup Software" and press
in the browser. When using a different Web Browser like Chrome or Firefox, you can go directly straight to point 9.



6. After vetting the insertion of the Windows User Account Control will appear. confirm the query with key Yes.

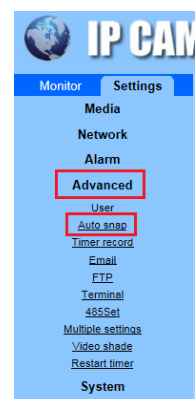


7. The program to install the Internet Explorer plug-in start hour press the "Next" and then "Install" button

8. With the Finish button to close the following installation.

9. Now select the menu item "PC View" "PC View" from the camera Home (see Figure 0 dung above).

10. Press the "Settings" button from the camera main menu.



11. Please select the newly published menu on the left and "Auto snap" out.

12, activation of the time-controlled single image recording on the local SD card or an external FTP Server

In the displayed auto-snap menu can enforce a value for the time in seconds 5-86400 time Interwall be set for still image shooting. To record a tape of the JPEG image on the local SD card so you put the heels in the setting "Save Picture on the SD Card" in the displayed week calendar can by clicking on the individual fields of the period are set for the recording of the individual images.



IP CAMERA

Monitor Settings

Media
Network
Alarm
Advanced
User
Auto-snap
Timer record
Email
FTP
Terminal
485Set
Restart timer
System

SD cardsnap interval: 60 sec

☒ Save Picture on the SD Card

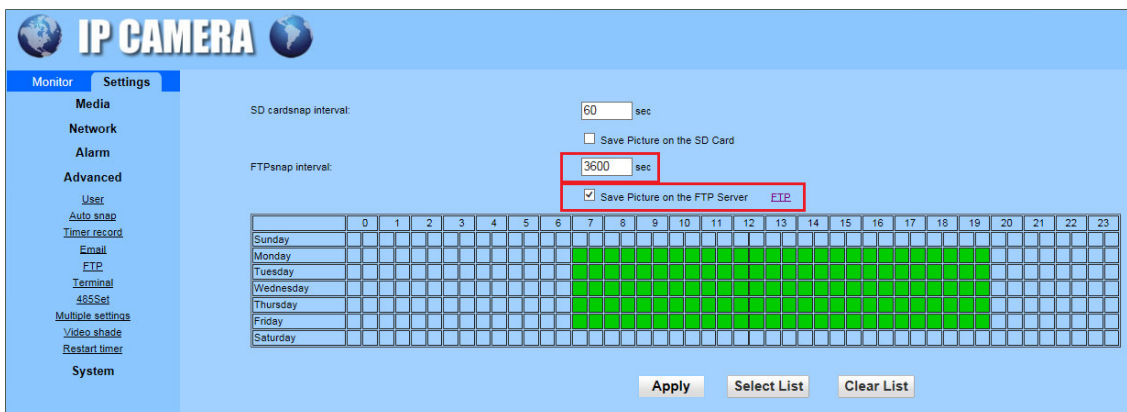
FTPsnap interval: 60 sec

☐ Save Picture on the FTP Server [FTP](#)

	0	1	2	3	4	5	6	7	8	9	10	11	12	13	14	15	16	17	18	19	20	21	22	23
Sunday																								
Monday																								
Tuesday																								
Wednesday																								
Thursday																								
Friday																								
Saturday																								

Apply Select List Clear List

When using an external FTP server for the recording of JPEG images please put the heels in the menu's "Save Picture on the FTP server" and enter the desired time interval for image capturing in the overlying field.



IP CAMERA

Monitor Settings

Media
Network
Alarm
Advanced
User
Auto-snap
Timer record
Email
FTP
Terminal
485Set
Multiple settings
Video shade
Restart timer
System

SD cardsnap interval: 60 sec

☐ Save Picture on the SD Card


FTPsnap interval: 3600 sec

☒ Save Picture on the FTP Server [FTP](#)

	0	1	2	3	4	5	6	7	8	9	10	11	12	13	14	15	16	17	18	19	20	21	22	23
Sunday																								
Monday																								
Tuesday																								
Wednesday																								
Thursday																								
Friday																								
Saturday																								

Apply Select List Clear List

When using an FTP server the appropriate access data in the FTP menu must be entered.



The screenshot shows the 'IP CAMERA' web interface. The left sidebar contains a menu with the following items: Monitor, Settings, Media, Network, Alarm, **Advanced** (highlighted with a red box), User, Auto snap, Timer record, Email, **FTP** (highlighted with a red box), Terminal, 485Set, Multiple settings, Video shade, Restart timer, and System. The main content area is titled 'FTP' and contains the following fields and options:

- Server Address:
- Server Port:
- User name:
- Password:
- Passive mode: ☒ On ☐ Off
- Path:
- Auto create dir: ☒ On ☐ Off
- Test FTP settings: Please set first, and then test.

At the bottom right of the main content area are two buttons: and .